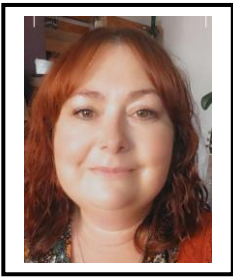


Education Inclusion Family Advisor Virtual Drop-In



Michelle West

Education Inclusion Family Advisors offer you an opportunity to ask for information, advice and support on any issue affecting your family life in a relaxed and confidential environment.

These areas include:

- Challenging behaviour
- Routines
- Supporting emotions and wellbeing
- School transitions
- Parenting strategies
- Building resilience and confidence
- Any other family challenges you might be facing

If you would like to talk with Michelle on a 1:1 basis about any of the above issues, then book onto the drop-in on **Tuesday 3rd March 9.30am-12.30pm. Sessions are 30 minutes long.**

To book on:

- Email michelle.west@cambridgeshire.gov.uk
- Mention “Drop-in” in the subject bar of your email
- Await a Microsoft Teams meeting invite for a 30 minute chat